

**NEW
RELEASE
2011**

Jeta 
grasslanz endophyte

Long Rotation Ryegrass

 **DLF
SEEDS**
SEEDS & SCIENCE

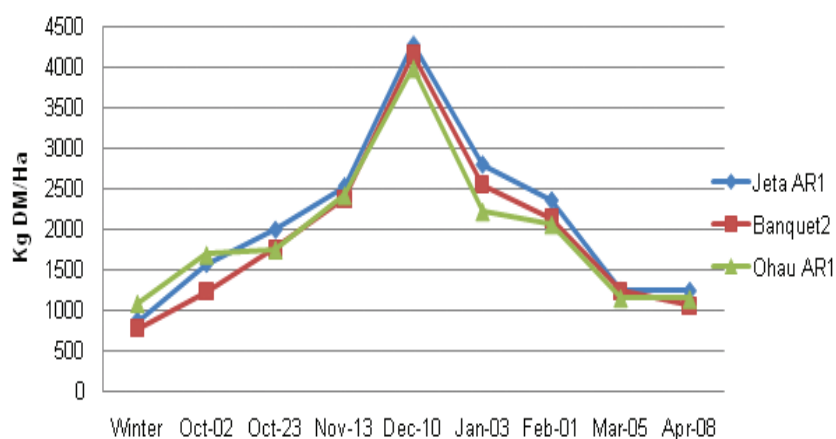
What is Jeta?

Jeta is the first of the endophyte ryegrasses to be released from DLF Seeds New Zealand breeding program; we are excited by the variety performance and have been very pleased with the reliability it has shown over a wide geography over the past 4 years.


The variety is showing excellent performance, with quick establishment, good winter yield, excellent feed quality and the ability to keep performing well into the summer.

Notably, it has averaged 6% higher yields in comparison to the existing industry standout varieties.

JETA 
LONG ROTATION RYEGRASS - ANNUAL DISTRIBUTION OF GROWTH



APPLICATION

- **PLOIDY**
Tetraploid
- **ENDOPHYTE**

- **PERSISTENCE**
Medium to long term pastures
- **FLOWERING DATE**
+7 days
- **FARM TYPE**
All classes of stock
- **SOWING RATE:**
Pasture
25 – 30kgs/Ha
Undersowing
12 – 15kgs/Ha

SPECIAL ATTRIBUTES

- Locally bred
- Fast establishing
- Very high yielding
- Reliable early and late season growth
- High disease resistance

Issue date:
Mar2011

